



NOTES

1. ANY SEPTIC LEACH FIELD LINES CUT DURING CONSTRUCTION OF NEW SANITARY SEWER LINE SHALL BE RECONNECTED AT CONTRACTOR'S EXPENSE
2. ALL STREETS HAVE 60' RIGHT OF WAY UNLESS OTHERWISE NOTED
3. SOIL BORING INFORMATION IS AVAILABLE FOR REVIEW AT ENGINEER'S OFFICE

UTILITY NOTES

CONTRACTOR TO NOTIFY INDIANA UNDERGROUND PLANT PROTECTION CENTER ("HOLEY MOLEY") @ 1-800-382-5544, MINIMUM 2 WORKING DAYS PRIOR TO THE START OF CONSTRUCTION AND REQUEST ALL UNDERGROUND UTILITIES BE MARKED

CALL ONLY ALERTS MEMBER UTILITIES, CONTRACTOR RESPONSIBLE FOR CONTACTING NON-MEMBER UTILITIES.

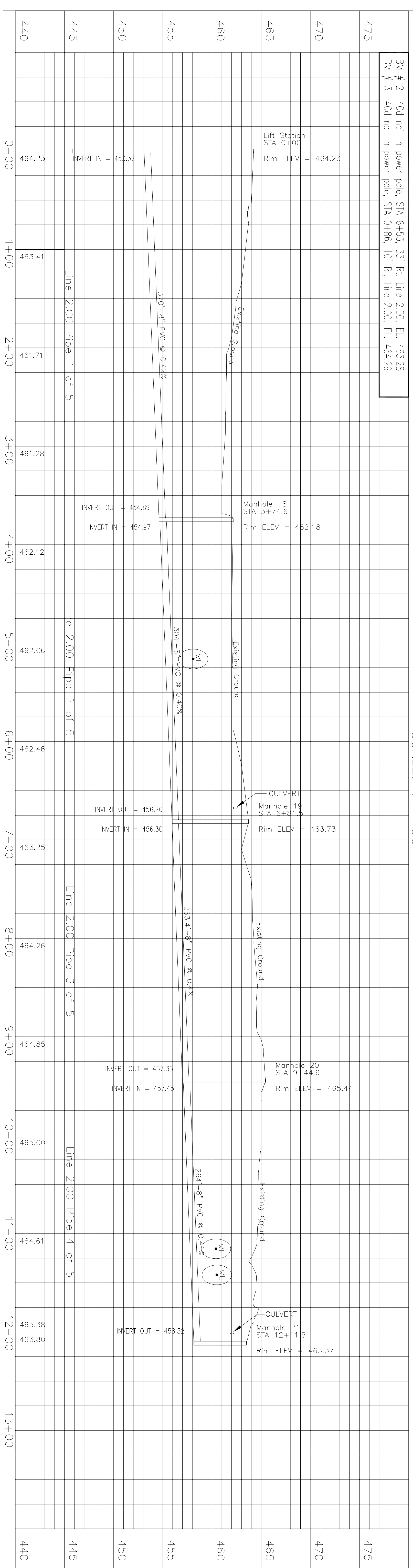
UTILITY COLOR CODES:

RED - ELECTRIC
 YELLOW - GAS, OIL, PETROLEUM PRODUCTS
 BLUE - WATER
 GREEN - SEWER
 WHITE - PROPOSED EXCAVATION

THE LOCATIONS OF UNDERGROUND UTILITIES AS SHOWN HEREIN HAVE BEEN OBTAINED FROM FIELD SURVEY AND RECORD PLANS. NEITHER THE OWNER NOR ENGINEER ASSUME RESPONSIBILITY FOR THE ACCURACY OF INFORMATION PROVIDED BY OTHERS

SEE APPENDIX OF SPECIFICATIONS FOR STANDARD DETAILS

SANITARY SEWER LINES TO BE LOCATED NO CLOSER THAN 10 FEET HORIZONTAL AND 1.5 FEET VERTICAL FROM WATER LINES.



PROFILE

SCALE: Ver 1" = 5' Horiz 1" = 50'

LEGEND:

Water Line

10'

18"

RECORD DOCUMENT

7/98

Plan and Profile
 Line 2.00

Florence Regional Sewer District
 Florence, Indiana

SHEET NUMBER
 7

JOB NO	ES-2453		
DWN BY	JCE		
CHK BY	JJG		
DATE	1/96		
SCALE	As Noted		
NO	DESCRIPTION	BY	DATE
	REVISIONS		

HOWARD J. BARTH & ASSOCIATES, INC.

CONSULTING ENGINEERS

347 E. WASHINGTON STREET
 GREENSBURG, INDIANA 47240

812-663-2177 FAX 812/663-7906

